

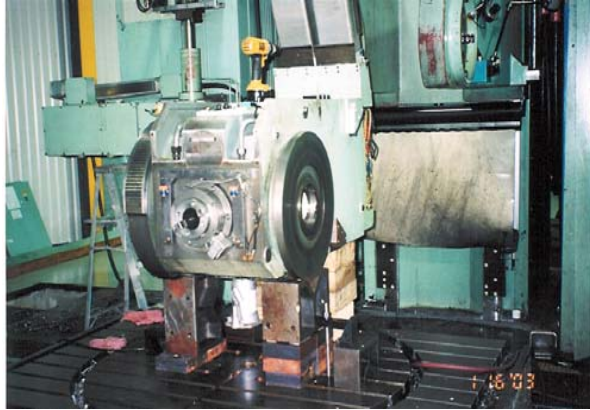
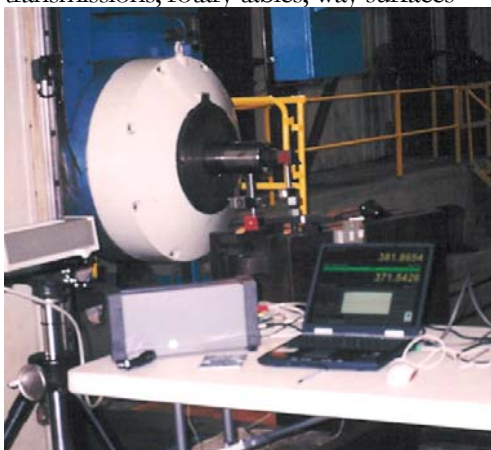
LIST OF SERVICES

MACHINE REPAIR

1. Removal and installation of large machine tools. Once installation is complete, we final level, align and laser the machine complete. We bring all tooling required to complete the job. All required documentation is provided. We work with your riggers to remove and to install your new equipment. Once rigging is complete and machine is running properly on a new foundation, we final level, square and align machine. We use the laser, ball bar and fixturing systems to adjust geometry positioning and document accuracy of your machine. All equipment is compliant with ANSI/NCSL Z540 and NIST traceable. (Exceptions for major holidays only)

2. Laser Calibration services to meet all customer requirements. Hamar, Faro, HP, Renishaw QC 10 ball bar system

3. Machine rebuilding and repair services of transmissions, rotary tables, way surfaces



Locher, Inc.
PO Box 388
Carroll, OH 43112-0388
Fax (740) 756-7571
Ph (740) 756-7570



LOCHER, INC.



LOCHER, INC.

Manufacture of loading systems conveyor systems



LOCHER, INC.



SPINDLES

In-place Spindle Taper Grinding

On-site Spindle Repair

On-site Installation Of Boring Mill
Replaceable Tapered Inserts

Morse Taper To #50 Taper Conversions.

Spindle Rebuilding Services

Spindle Management Products

Full "Run-in" Of Spindle Cartridges and
Milling Heads Over 200 HP